



# GAT MONTHLY MEMBERSHIP PROGRESS REPORT

Results as of: 1/31/2023

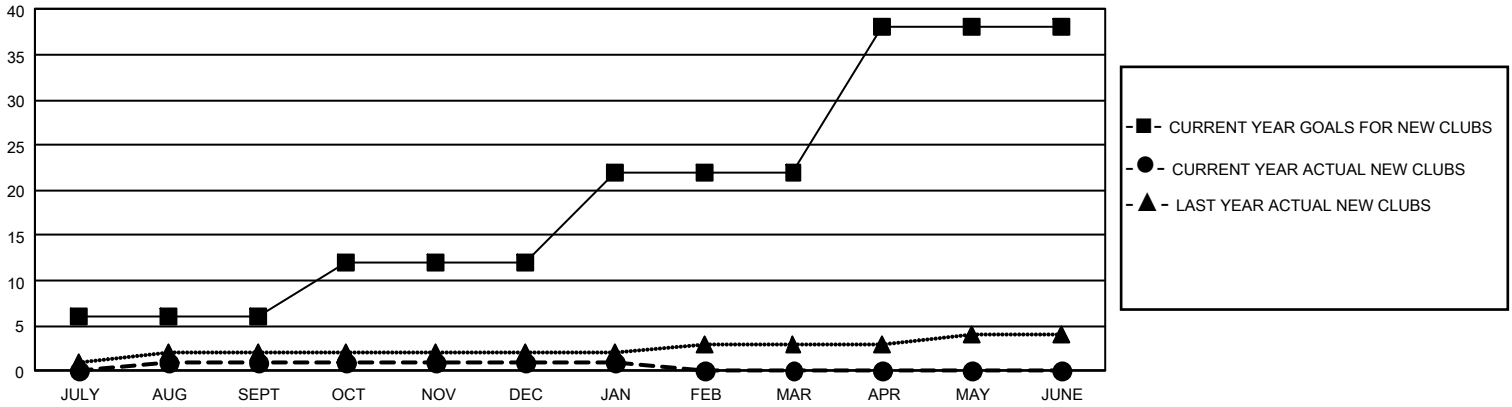
## GMT Constitutional Area 1, Group D

REPORT DOES NOT INCLUDE CLUBS IN UNDISTRICTED AREAS.

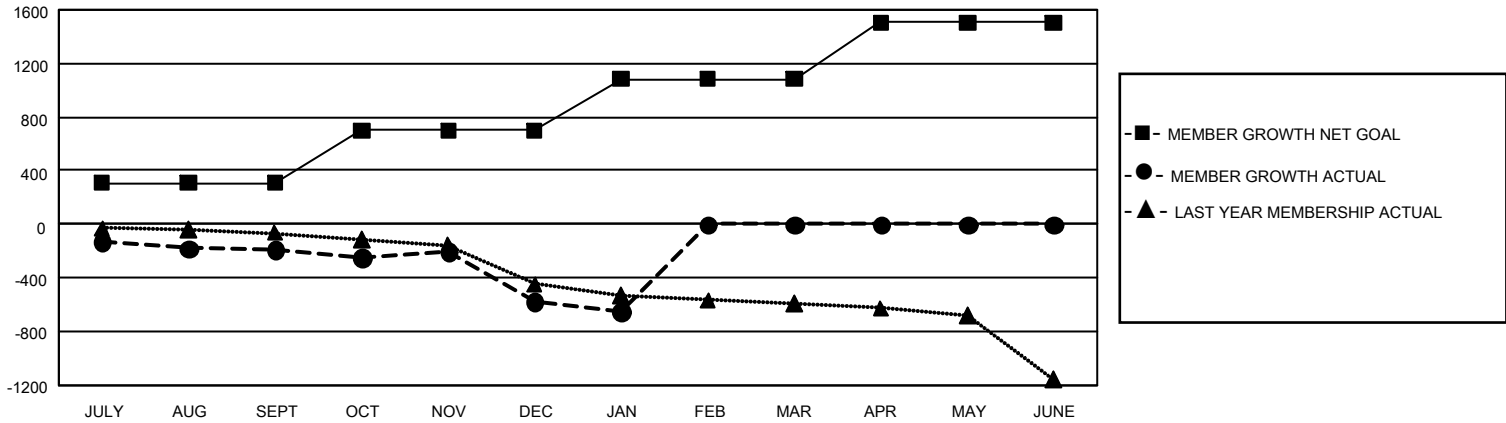
Clubs			
RESULTS FOR 2022-2023			
QUARTER	NEW CLUB GOAL	NEW CLUBS	DROPPED CLUBS
JULY/AUG/SEPT	18	1	8
OCT/NOV/DEC	18	0	16
JAN/FEB/MAR	30	0	1
APR/MAY/JUNE	48	0	0

Members			
RESULTS FOR 2022-2023			
QUARTER	MEMBER GROWTH NET GOAL	MEMBER GROWTH ACTUAL	DROPPED MEMBERS ACTUAL (including transfers)
JULY/AUG/SEPT	309	508	625
OCT/NOV/DEC	389	522	854
JAN/FEB/MAR	384	253	276
APR/MAY/JUNE	424	0	0

GOALS AND ACTUAL NEW CLUBS CUMULATIVE



GOALS AND ACTUAL MEMBERS CUMULATIVE



<b>DROPPED CLUBS: 25</b>	420 CLUBS OF 1,031 ADDED 1 OR MORE NEW MEMBERS	<b>GENDER DISTRIBUTION</b>	
		MALE 16,716 (66.72%) FEMALE 8,334 (33.26%) NON BINARY 0 (0.00%) PREFER NOT TO ANSWER 4 (0.02%)	
<b>DROPPED MEMBERS</b>		<a href="#">CLICK HERE FOR CUMULATIVE MEMBERSHIP DATA</a>	TOTAL FAMILY UNIT MEMBERS 5,077
DECEASED 352 CLUB CANCELLED 137 OTHER 1,266 <b>TOTAL 1,755</b>	FAMILY MEMBERS PAYING HALF DUES 2,616		